

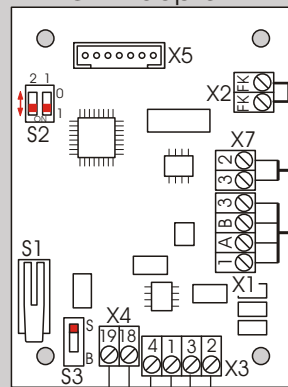
0231dcwTV1cn

### Anschlussplan TV1xx an TV DCW Adapter

S2 = Komponentenadresse

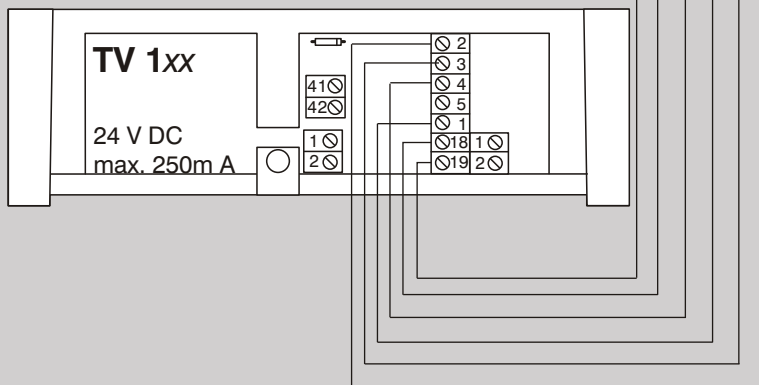
Schalter	Adresse	
1	2	
0	0	1
1	0	2
0	1	3
1	1	4

#### TV DCW Adapter



4 x 2 x 0,6

TL-S TMS  
(X6)



Änderungen vorbehalten