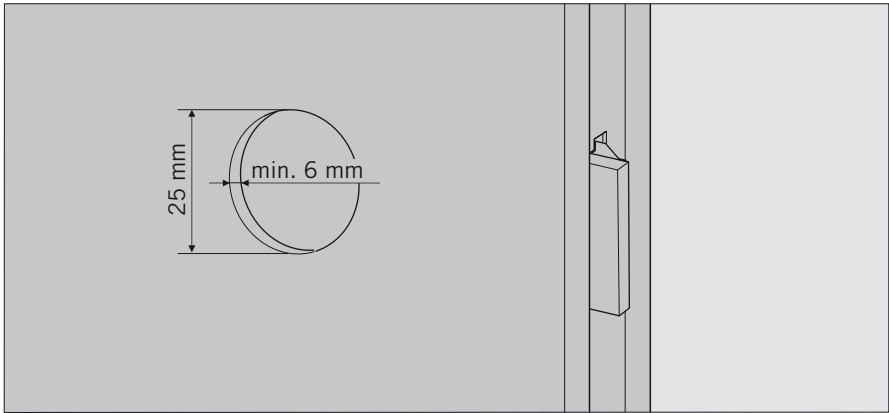


Best.-Nr. 900 500 55002
10/09



Montagevorbereitung

Weitere Informationen u. a. zur bestimmungsgemäßen Verwendung und zur Vermeidung von vorhersehbarer Fehlanwendung finden Sie unter www.dorma.de.

Gewährleistungsansprüche können nur akzeptiert werden, wenn die Montagearbeiten von einem Fachbetrieb durchgeführt werden.

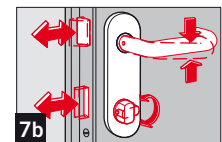
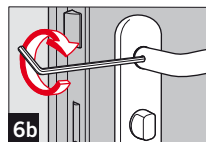
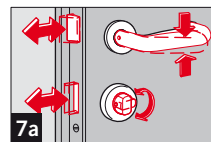
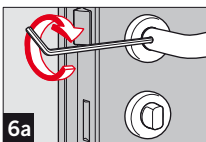
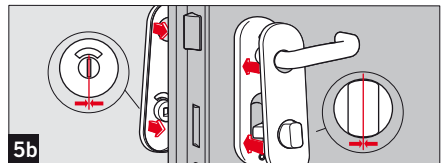
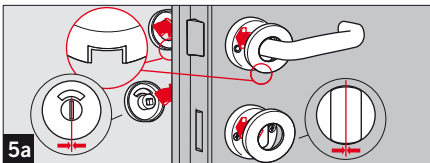
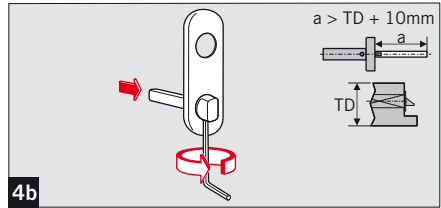
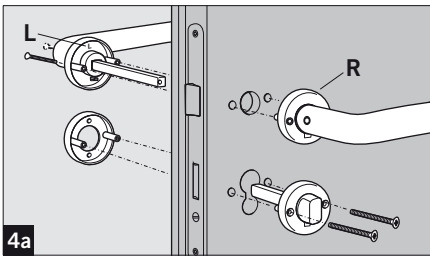
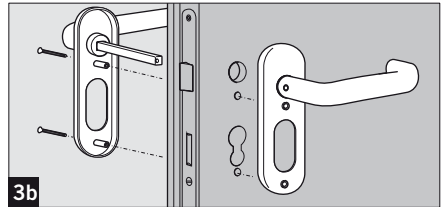
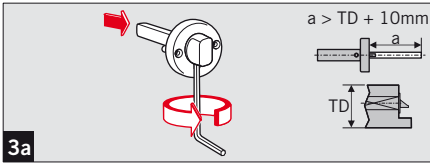
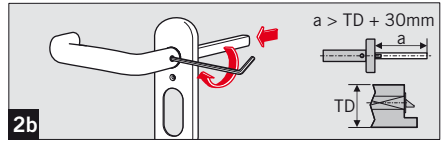
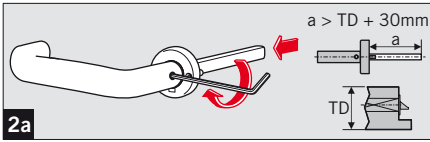
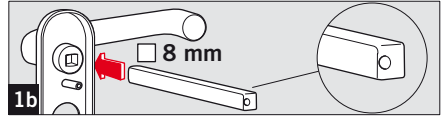
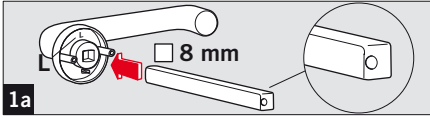
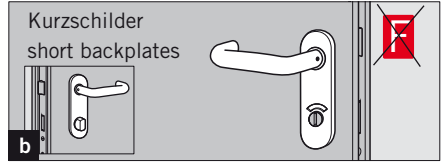
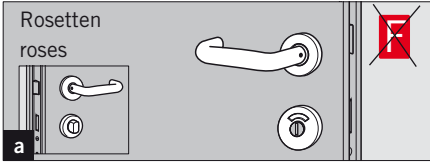
Darstellung der Produkte teilweise schematisch.

Mounting Preparation

Further information regarding e. g. the intended application as well as how to avoid predictable misuse you find at www.dorma.de.

Warranty claims can only be accepted, if the fitting is carried out by a trained technical specialist.

Products partial schematically shown.



Änderungen vorbehalten
Subject to change without notice

